

PATHWAY

NF-κB

热门信号通路产品

成都正能生物技术有限责任公司



PlatinumAb
精品抗体



RecRabs®
重组兔单抗



HistO-Plus®
病理级抗体



Ab Pairs
抗体对



KnockOut
KO验证抗体

微信公众号







NF-κB 信号通路关键路径

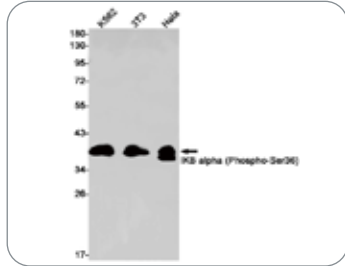
NF-κB (核因子κB) 是一个转录因子家族, 几乎存在于所有细胞中, 是由Rel家族构成的异二聚体蛋白。该家族蛋白分为两类: 第一类包括p50 (NF-κB1) 和p52 (NF-κB2) 蛋白; 第二类包括p65 (RelA)、RelB和Rel (c-Rel) 蛋白。NF-κB可以被多种刺激因子诱导, 使其能够迅速从抑制状态转化为活化状态。

NF-κB家族成员的功能可能存在代偿性, 使得这些蛋白可以诱导成百上千种基因的表达。NF-κB的诱导存在多种生物化学机制, 既包括抑制物的消除, 又包括多种次级共价修饰过程。一般情况下, NF-κB的活化会与很多转录调节因子的活化整合在一起, 快速响应上游调节信号。

NF-κB在维持机体的正常生理功能中起着很重要的作用。经典的NF-κB信号通路与机体的自身免疫有关, 脊椎动物的炎症反应就是自身免疫的重要表现形式之一, 这是一个包含很多步骤的复杂过程, 既维持了机体的正常生理功能, 又会对机体长期的性能产生影响; 高级脊椎动物的获得性免疫也是由NF-κB通过非经典通路诱导调节的。同时, NF-κB也可以保护机体免受其他伤害, 比如有毒的化学物质和射线等, 它在细胞凋亡、细胞周期调控与细胞分化等方面有着重要的调控作用。

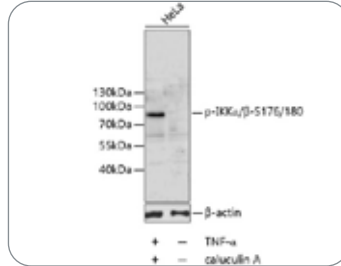
NF-κB 通路 · 相关靶标		 HOT 热门靶标	 PlatinumAb 精品抗体	 RecRabs® 重组兔单抗	 Cited Product 发文明引产品
靶标	产品货号	产品名称	反应种属	应用	
TNFAIP3	R25948	TNFAIP3 Rabbit mAb	Human	WB,IHC-F,IHC-P,ICC/IF	
	380682	IKB alpha Rabbit pAb	Human,Mouse,Rat	WB,IHC-P,ICC/IF,IP	
IKBα	R24672	Phospho-IKB alpha (Ser36) Rabbit mAb	Human,Mouse	WB	
	340776	Phospho-IKB alpha (Ser32/Ser36) Rabbit pAb	Human,Mouse,Rat,Monkey	WB,IHC-F,IHC-P,ICC/IF,ELISA	
IKBβ	R24673	IKB beta Rabbit mAb	Human,Mouse	WB,IHC-P,IP	
	251238	IKB beta (3H3) Mouse mAb	Human,Rat,Mouse	IHC-P	
IKKα	R24674	IKK alpha Rabbit mAb	Human,Mouse,Rat	WB	
	381289	IKK alpha Rabbit pAb	Human,Mouse,Rat	WB,IHC-P,ICC/IF,IP,FC	
IKKβ	381216	IKK alpha/beta Rabbit pAb	Human,Mouse,Rat	WB,ICC/IF,IP	
	530546	Phospho-IKK alpha/beta (Ser176/180) Rabbit pAb	Human,Mouse	WB	
IKKγ	R24676	IKK beta Rabbit mAb	Human,Mouse,Rat	WB,ICC/IF	
	347345	Phospho-IKK beta (Tyr188) Rabbit pAb	Human,Mouse,Rat,Monkey	WB,IHC-P,ELISA	
NF-κB p65	R24678	IKK gamma Rabbit mAb	Human,Mouse,Rat	WB,ICC/IF,IP	
	380172	NF-κB p65 Rabbit pAb	Human,Mouse	WB,IHC-P,ICC/IF,IP,FC	
NF-κB p105	250060	NF-κB p65 (3D2) Mouse mAb	Human,Mouse,Rat	WB,IHC-F,IHC-P,ICC/IF,IP	
	310012	Phospho-NF-κB p65 (Thr254) Rabbit pAb	Human,Mouse,Rat	WB,IHC-P,ICC/IF	
NF-κB p100	310013	Phospho-NF-κB p65 (Ser536) Rabbit pAb	Human,Mouse,Rat	WB,IHC-P,ICC/IF	
	250388	Acetyl-NF-κB p65 (Lys314/Lys315) (SF4) Mouse mAb	Human,Rat,Mouse	IHC-P	
c-Rel	200965	NF-κB p105 (5E3) Mouse mAb	Human,Mouse,Rat	WB	
Rel B	R25145	NF-κB p100 Rabbit mAb	Human,Mouse,Rat	WB,ICC/IF,IP	
	R26628	c Rel Rabbit mAb	Human	WB,IP	
TAK1	R25572	Rel B Rabbit mAb	Human,Mouse,Rat	WB,IP	
	381877	Rel B Rabbit pAb	Human,Mouse,Rat	WB,IHC-P,ICC/IF,IP,FC	
TAB1	200993	TAK1 (3G1) Mouse mAb	Human,Mouse,Rat,Monkey	WB	
	R25850	TAK1 Rabbit mAb	Human	WB,IHC-F,IHC-P,ICC/IF	
TBK1	R25849	Phospho-TAK1 (Ser439) Rabbit mAb	Human,Mouse,Rat	WB,ICC/IF,IP	
	252059	Phospho-TAK1 (Thr187) Rabbit pAb	Human,Mouse,Rat	WB,IHC-P,ELISA	
TRAF2	383163	TAB1 Rabbit pAb	Human,Mouse,Rat	WB,IHC-P,ICC/IF,IP,FC	
TRAF3	R23313	TBK1 Rabbit mAb	Human,Hamster,Rat	WB	
	R380780	TBK1 Rabbit mAb	Human,Mouse,Rat	WB,IHC-P,ICC/IF	
TRAF4	381394	TRAF2 Rabbit pAb	Human,Mouse,Rat	WB,IHC-P,ICC/IF,IP,FC	
	160776	TRAF3 Rabbit pAb	Human,Mouse	WB,IHC-P	
TRAF6	R380873	TRAF4 Rabbit mAb	Human,Mouse	WB,ICC/IF,FC	
	821360	TRAF4 Rabbit pAb	Human,Mouse	WB,IHC-P	
TRAF6	R25965	TRAF6 Rabbit mAb	Human,Rat	WB	
	380803	TRAF6 Rabbit pAb	Human,Mouse,Rat	WB,IHC-P,ICC/IF	

#R24672
Phospho-I κ B alpha (Ser36) Rabbit mAb



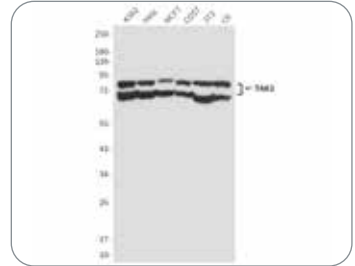
Western blot analysis of I κ B alpha (Phospho-Ser36) in K562, 3T3, HeLa lysates using Phospho-I κ B alpha (Ser36) antibody.

#530546
Phospho-I κ K alpha/beta (Ser176/180) Rabbit pAb



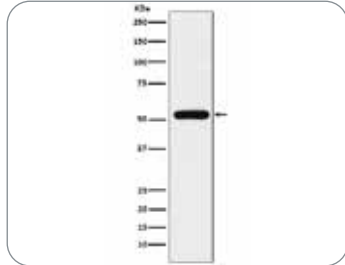
Western blot analysis of Phospho-I κ K alpha/beta (Ser176/180) in HeLa lysates using Phospho-I κ K α / β 5176/180 antibody.

#200993
TAK1 (3G1) Mouse mAb



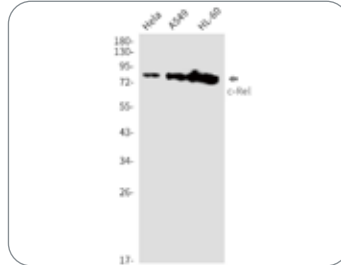
Western blot analysis of TAK1 in K562, HeLa, MCF-7, COS7, 3T3 and C6 lysates using TAK1 antibody.

#383163
TAB1 Rabbit pAb



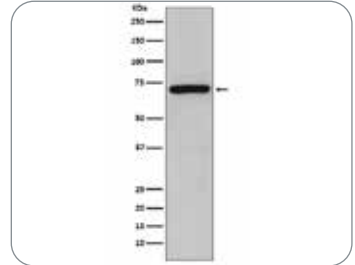
Western blot analysis of TAB1 in MCF-7 lysates using TAB1 antibody.

#R26628
c-Rel Rabbit mAb



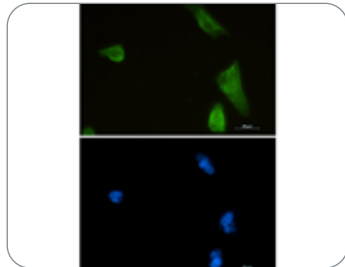
Western blot analysis of c-Rel in HeLa, A549, HL-60 lysates using c-Rel antibody.

#381877
Rel B Rabbit pAb



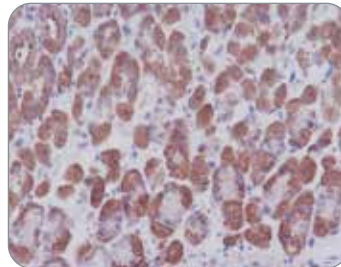
Western blot analysis of RelB in Raji lysates using Rel B antibody.

#R24676
IKK beta Rabbit mAb



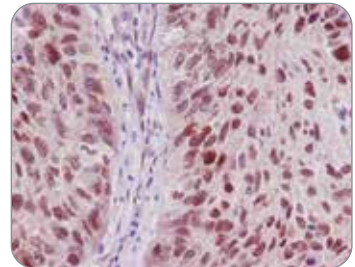
Immunocytochemistry analysis of IKK beta (green) in U87-MG using IKK beta antibody, and DAPI (blue).

#380682
IKB alpha Rabbit pAb



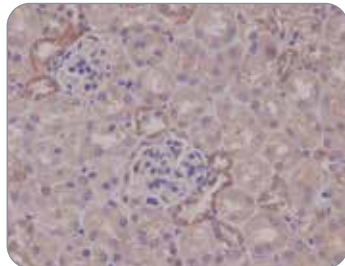
Immunohistochemistry analysis of paraffin-embedded mouse stomach using I κ B alpha antibody. High-pressure and temperature Sodium Citrate pH 6.0 was used for antigen retrieval.

#380803
TRAF6 Rabbit pAb



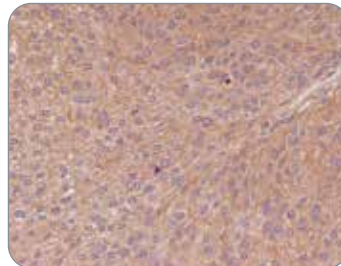
Immunohistochemistry analysis of paraffin-embedded Human lung carcinoma using TRAF6 antibody. High-pressure and temperature Sodium Citrate pH 6.0 was used for antigen retrieval.

#381289
IKK alpha Rabbit pAb



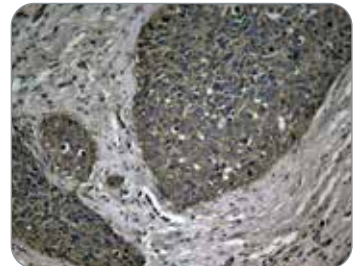
Immunohistochemistry analysis of paraffin-embedded mouse kidney using IKK alpha antibody. High-pressure and temperature Sodium Citrate pH 6.0 was used for antigen retrieval.

#380172
NF- κ B p65 Rabbit pAb



Immunohistochemistry analysis of paraffin-embedded Human transitional carcinoma of bladder using NF κ B p65 antibody. High-pressure and temperature Sodium Citrate pH 6.0 was used for antigen retrieval.

#310013
Phospho-NF- κ B p65 (Ser536) Rabbit pAb



Immunohistochemistry analysis of paraffin-embedded Human breast carcinoma tissue using Phospho-NF κ B p65 (Ser536) antibody. High-pressure and temperature Sodium Citrate pH 6.0 was used for antigen retrieval.

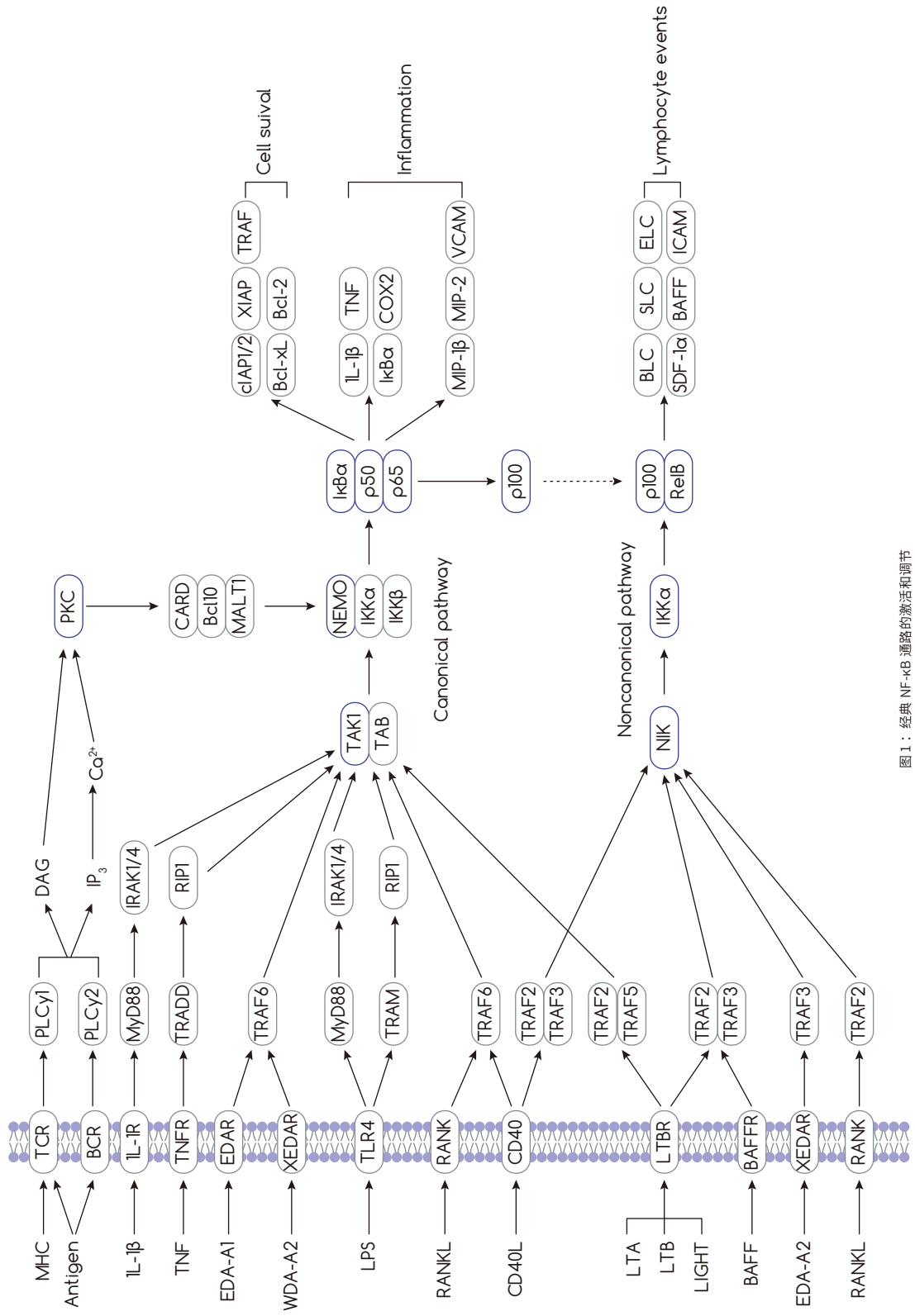


图 1：经典 NF-κB 通路的激活和调节