

全球百大热门靶点

ZENBIO & Cite Ab **TOP**

- ◎ 关于正能生物
- ◎ Top100 热门产品



目录 Contents

01 / 企业简介

06 / 精品一抗

按靶标名称首字母A-Z顺序排列

15 / 精品内参

17 / 精品标签

18 / 精品二抗

20 / 售前&售后支持



产品展示说明：

AKT Rabbit pAb

#342529 | **Reactivity:** Human, Mouse, Rat | **Application:** WB, IHC-F, IHC-P, ICC/IF, ELISA

PMID: 34752070 | IF=5.3 | Rat | WB | *Journal Of Agricultural And Food Chemistry*

PMID: 35212326 | IF=6.8 | Human | WB | *Biomaterials Science*

(产品应用详情以官网实际展示为准)

产品名称

产品货号 | 反应种属 | 应用

文献ID | 影响因子 | 样本种属 | 实验应用 | 期刊名称

发展历程

Milestones

60+

全球代理商

16年

专注抗体研发

中国西部第一家独立研发、生产、销售蛋白和抗体的生物高科技企业。



2023年

拓展国际市场...



2020年

品牌运营团队建成
建设全国营销网络



2014年

建立IVD原料抗体产品线，
创立自主品牌：

hyruz
HYRUX MED-TECHNOLOGY
汇瑞新元生物



2011年

持续加大研发投入，
创立自主品牌：

zenbio



2007年

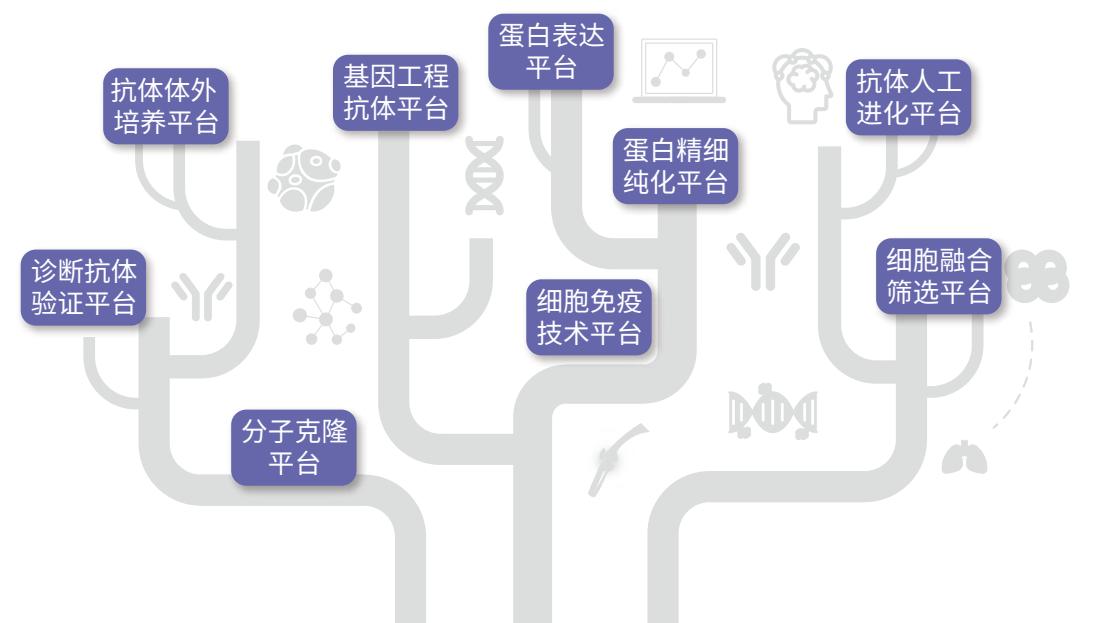
正能生物成立，为国
际知名抗体品牌企业
提供OEM生产



技术优势

Technical Superiorities

经过多年投入和积累，正能搭建了蛋白和抗体的全流程平台，并在各种前沿技术方面均有涉足。



KO 靶基因敲除

多种细胞系验证

独立抗体
验证

验证策略
Validation Strategies

标签
蛋白表达

重组验证

8大抗体验证策略

激动剂/抑制剂验证

多批次多种抗体比较验证

修饰验证

产品线简介

Introduction of Product Lines

科研抗体

正能生物核心产品线

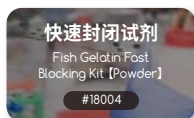
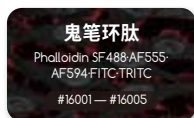
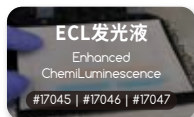
- 在架产品数量 **15000+**
- 5大特色产品线，满足客户多种应用场景需求
- 涵盖一抗、二抗、流式抗体、内参&标签抗体以及抗体对等主要抗体产品类型



免疫检测辅助试剂

围绕免疫学实验开发的配套周边产品

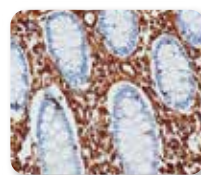
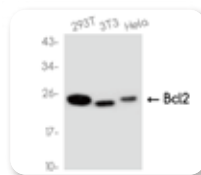
- ECL 发光液
经典款、高敏款、超敏款，媲美进口产品
- mIHC 多重免疫组化染色试剂盒
比荧光二抗更可靠的多色组化检测帮手
- 鬼笔环肽
经典的细胞骨架荧光染料
- 鱼胶快速封闭剂
成分简单，使用便捷的一款封闭剂
- 抗鼠/兔通用 DAB 组化试剂盒
使用多聚 HRP 标记技术，显色更灵敏
- PAP PEN 免疫组化笔
正能质检长期自用，品质稳定



定制化服务

基于正能 16 年抗体开发及验证经验开发的配套服务

- 兔多抗、小鼠单抗定制
- 多种免疫学实验及生化检测服务
- 通过专业的项目管理方法及丰富实验操作经验，为实验和服务质量保驾护航



重组蛋白

协同其他免疫学产品共同开发的周边产品

- 新冠蛋白、重组细胞因子以及质控品和校准品
- 涵盖炎症因子、肿瘤研究、代谢调控等多个领域的经典指标



诊断原料

专注 IVD 抗原抗体原料工业化生产

- 隶属正能生物旗下子品牌“汇瑞新元”
- 覆盖肾功、肝功检测的抗体原料，不同粒径的羧基微球
- 采用鼠单抗、兔单抗技术，工艺源于正能 16 年生产研发经验



国家高新技术企业
科学技术进步奖



通过 ISO 认证
ISO13485 · ISO9001



IVD 原材料为业务核心
多项实用新型技术专利

➤ 登录“汇瑞新元”官网，
查看更多产品信息
www.hyruix.cn

hyruix
HYRUX BIO-TECHNOLOGY
汇瑞新元生物

特色产品

Featured Products



PlatinumAb 精品抗体

- 数量 **5600+**
- 更多样本、更多应用验证，更多文献和用户反馈数据支持
- 更多可选规格：20 / 50 / 100 μ L



RecRabs[®] 重组兔单抗

- 数量 **4800+**
- 抗体开发技术与应用趋势，正能兔单抗覆盖超80%常见指标
- 抗体效价更高，特异性更高，产品批间更稳定



Hist[®]-Plus 病理级IHC抗体

- 数量 **460+**
- 融合正能16年单抗生产工艺
- 热门核心指标全覆盖，海量病理样本验证，免疫组化更放心
- 诊断级原料，病理研究首选



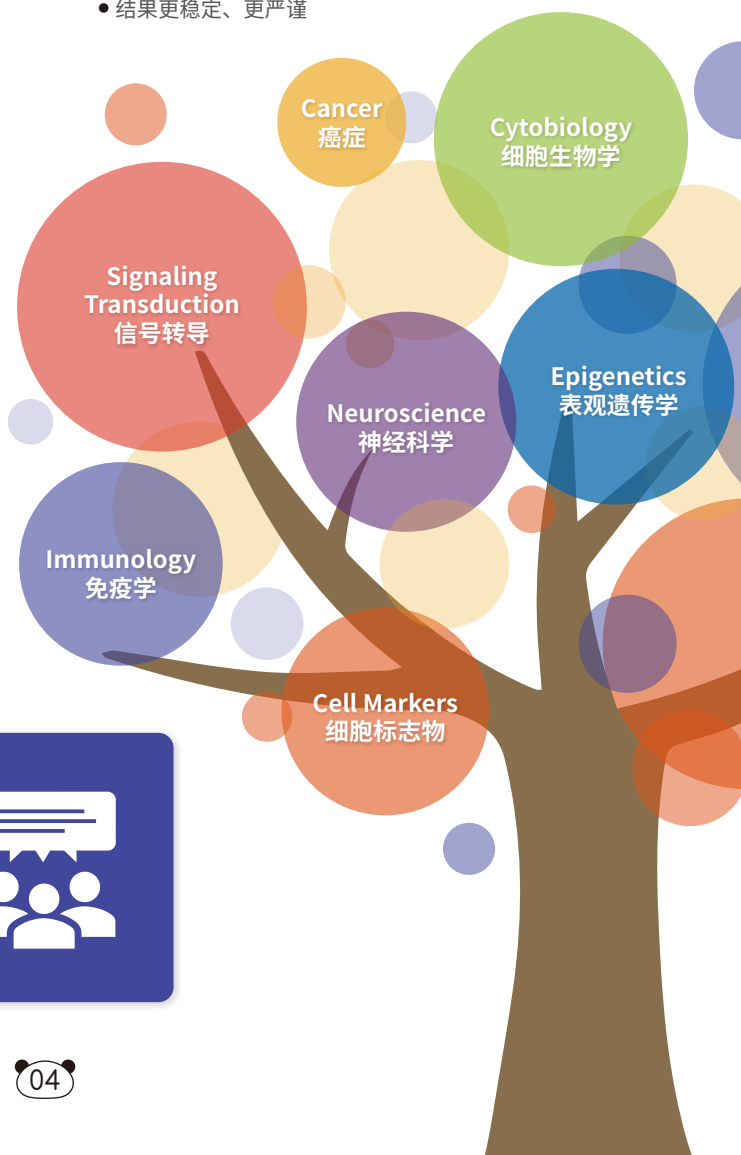
Knock[®]Out KO验证抗体

- 数量 **160+**
- 通过CRISPR/Cas9技术编辑靶基因获得对照样本
- 结果更稳定、更严谨



Ab Pairs ELISA抗体对

- 指标数量 **190+**，产品数量 **390+**
- 涉及肿瘤免疫、神经退行以及毒理、生化检测的常见指标及标志物
- 包含标记 / 非标记两种检测抗体（视不同靶点而定）



正能产品线建设的依据是什么？

- ◎ 前沿研究趋势
- ◎ 用户广泛反馈
- ◎ 新技术的应用
- ◎ 市场动态变化



合作单位

Cooperating Organization

正能先后与中国科学院、清华大学、上海交通大学、四川大学等单位建立了深度合作关系，共同发掘了诸多领域的相关指标及检测标志物产品，服务于国内外上千家科研单位。

2023年，正能生物与 **PSL Alliance** 和 **CiteAb** 合作，在海外市场开疆拓土...



中国科学院



清华大学



北京大学



上海交通大学



四川大学
华西医院



中山大学



南京大学



武汉大学



陆军军医大学



重庆医科大学



南方医科大学



华南农业大学



南京农业大学



厦门大学



北京友谊医院



香港中文大学



中国人民解放军
总医院



多伦多大学



哥伦比亚大学



正能生物正与 PSL Alliance 和 CiteAb 紧密合作以拓展海外市场，服务全球用户。

ZENBIO is now cooperating closely with the PSL Alliance and CiteAb to develop our overseas market...



精品一抗 Primary Antibodies



AKT Rabbit pAb

#342529 | Reactivity: Human, Mouse, Rat | Application: WB, IHC-F, IHC-P, ICC/IF, ELISA

PMID: 33627636 | IF=8.5 | Human | WB | *Cell Death & Disease*

PMID: 35212326 | IF=6.8 | Human | WB | *Biomaterials Science*

PMID: 33522639 | IF=6.8 | Mouse | WB | *Cell Proliferation*

Phospho-AKT (Ser473) Rabbit pAb

#310021 | Reactivity: Human, Mouse, Rat | Application: WB, IHC-P

PMID: 35883196 | IF=8.1 | Rat | WB | *Stem Cell Research & Therapy*

PMID: 35212326 | IF=6.8 | Human | WB | *Biomaterials Science*

PMID: 34671204 | IF=6.6 | Mouse | WB | *International Journal of Biological Sciences*

Alkaline Phosphatase Rabbit pAb

#381009 | Reactivity: Human, Mouse, Rat | Application: WB, IHC-P, ICC/IF, IP, FC

PMID: 26087116 | IF=11.7 | Yeast | WB | *Redox Biology*

PMID: 31131062 | IF=8.1 | Human | WB | *Theranostics*

PMID: 36683745 | IF=5.8 | Mouse | WB | *Regenerative Biomaterials*

ASC Rabbit pAb

#340097 | Reactivity: Human, Mouse, Rat | Application: WB, IHC-F, IHC-P, ICC/IF, ELISA

PMID: 34413926 | IF=6.5 | Human | WB | *Oxidative Medicine and Cellular Longevity*

PMID: 36232521 | IF=6.2 | Mouse | WB | *INTERNATIONAL JOURNAL OF MOLECULAR SCIENCES*

PMID: 32745911 | IF=4.5 | Rat | WB | *Biomedicine & Pharmacotherapy*

AMPK alpha 1 Rabbit pAb

#380431 | Reactivity: Human, Mouse, Rat | Application: WB, IHC-P, ICC/IF, IP, FC

PMID: 35716782 | IF=9.8 | Human | WB | *CANCER LETTERS*

PMID: 36565836 | IF=8 | Pig | WB | *INTERNATIONAL JOURNAL OF BIOLOGICAL MACROMOLECULES*

PMID: 34726809 | IF=5.8 | Rat | WB | *Frontiers in Pharmacology*

Phospho-AMPK alpha 1 (Ser496) Rabbit pAb

#310044 | Reactivity: Human, Mouse, Rat | Application: WB, IHC-P, ICC/IF

PMID: 35716782 | IF=9.8 | Human | WB | *CANCER LETTERS*

PMID: 34726809 | IF=5.8 | Rat | WB | *Frontiers in Pharmacology*

PMID: 32871523 | IF=4.3 | Rat | WB | *Phytomedicine*

alpha Tubulin (4C9) Mouse mAb

#250009 | Reactivity: Human, Mouse, Rat | Application: WB, IHC-F, IHC-P, ICC/IF, IP

PMID: 35762925 | IF=8.0 | Human | WB | *JOURNAL OF MEDICINAL CHEMISTRY*

PMID: 35964504 | IF=5.3 | Human | WB | *BIOORGANIC CHEMISTRY*

PMID: 34951719 | IF=5.2 | Human | WB | *Faseb Journal*

Actin Rabbit pAb

#251485 | Reactivity: Human, Mouse, Rat | Application: WB, IHC-P, ELISA

PMID: 34852303 | IF=8.9 | Rat | WB | *Acta Biomaterialia*

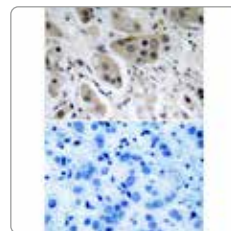
alpha Smooth Muscle Actin Rabbit mAb

#R23450 | Reactivity: Human, Mouse, Rat | Application: WB, IHC-P

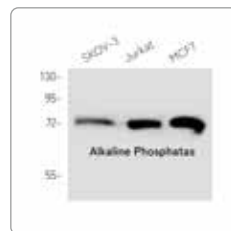
PMID: 36437481 | IF=20.6 | Human | WB | *JOURNAL OF MEDICAL VIROLOGY*

PMID: 36497096 | IF=7.7 | Rat | IHC | *Cells*

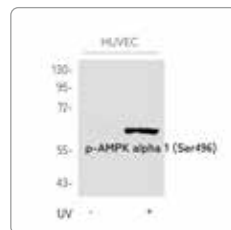
PMID: 34952245 | IF=5.3 | Human | WB | *Bioorganic Chemistry*



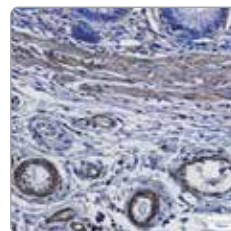
#310021 Immunohistochemistry analysis of paraffin-embedded Human breast carcinoma tissue using Akt (Phospho-Ser473) antibody. High-pressure and temperature Sodium Citrate pH 6.0 was used for antigen retrieval. Sample with blocking peptide on the lower.



#381009 Western blot analysis of Alkaline Phosphatase in SKOV-3, Jurkat and MCF-7 lysates using Alkaline Phosphatase antibody.



#310044 Western blot analysis of Phospho-AMPK alpha 1 (Ser496) in HUVEC lysates untreated or treated with UV using AMPK alpha 1 (Phospho-Ser487) antibody.



#R23450 Immunohistochemistry analysis of paraffin-embedded Human colon cancer using alpha smooth muscle Actin antibody. High-pressure and temperature Sodium Citrate pH 6.0 was used for antigen retrieval.

A

精品一抗 Primary Antibodies



B

Bcl2 Rabbit pAb

#381702 | **Reactivity:** Human, Mouse | **Application:** WB, IHC-P, ICC/IF, FC
PMID: 29678610 | IF=7.4 | Mouse | WB | *Free Radical Biology And Medicine*
PMID: 34926442 | IF=6.7 | Human | WB | *Frontiers in Cell and Developmental Biology*
PMID: 34987701 | IF=6.5 | Human | WB | *Oxidative Medicine and Cellular Longevity*

Beclin 1 Rabbit pAb

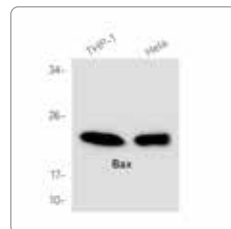
#381896 | **Reactivity:** Human, Mouse, Rat | **Application:** WB, IHC-P, ICC/IF, IP
PMID: 35224166 | IF=7.1 | Human | WB | *Genes & Diseases*
PMID: 29678610 | IF=6.0 | Mouse | WB | *FREE RADICAL BIOLOGY AND MEDICINE*
PMID: 34752070 | IF=5.3 | Rat | WB | *Journal Of Agricultural And Food Chemistry*

Bax Rabbit pAb

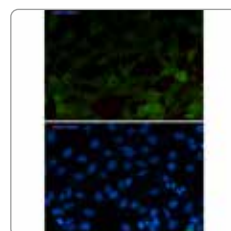
#380709 | **Reactivity:** Human, Mouse, Rat, Hamster | **Application:** WB, IHC-P, IP, FC
PMID: 36513690 | IF=17.7 | Human | IF | *Nature Communications*
PMID: 36099654 | IF=6.7 | Rat | WB | *PHYTOMEDICINE*
PMID: 36739833 | IF=5.7 | Mouse | WB | *INTERNATIONAL IMMUNOPHARMACOLOGY*

beta Catenin Rabbit mAb

#R23616 | **Reactivity:** Human, Mouse, Rat | **Application:** WB, ICC/IF
PMID: 36068975 | IF=8.0 | Mouse, Human | WB | *JOURNAL OF MEDICINAL CHEMISTRY*
PMID: 34906775 | IF=6.5 | Mouse | WB | *Biomedicine & Pharmacotherapy*



#380709 Western blot analysis of Bax in THP-1 and HeLa lysates using Bax antibody.



#R23616 Immunocytochemistry analysis of beta Catenin (green) in 293T using beta Catenin antibody, and DAPI(blue).

C

Cleaved-Caspase 3 p17 Rabbit pAb

#341034 | **Reactivity:** Human, Mouse, Rat | **Application:** WB, ICC/IF, IHC-F, IHC-P, ELISA
PMID: 34975499 | IF=5.8 | Rat | WB | *Frontiers in Pharmacology*
PMID: 33836250 | IF=8.7 | Human | WB | *Cancer Letters*
PMID: 29678610 | IF=7.4 | Mouse | WB | *Free Radical Biology And Medicine*

Cyclin D1 Rabbit pAb

#380999 | **Reactivity:** Human, Mouse, Rat | **Application:** WB, IHC-P, ICC/IF, IP
PMID: 36068975 | IF=8.0 | Human | WB | *JOURNAL OF MEDICINAL CHEMISTRY*
PMID: 34948148 | IF=5.9 | Mouse | WB | *International Journal Of Molecular Sciences*
PMID: 32698579 | IF=5.3 | Human | WB | *Journal Of Agricultural And Food Chemistry*

CD63 Rabbit pAb

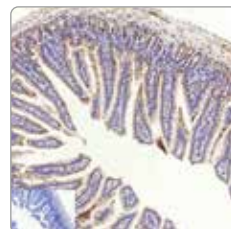
#340219 | **Reactivity:** Human | **Application:** WB, IHC-F, IHC-P, ICC/IF, ELISA
PMID: 34852303 | IF=8.9 | Rat | WB | *Acta Biomaterialia*
PMID: 35093186 | IF=6.8 | Human | WB | *Stem Cell Research & Therapy*
PMID: 35125868 | IF=6.4 | Swines | WB | *International Journal of Nanomedicine*

Caspase 9 Rabbit pAb

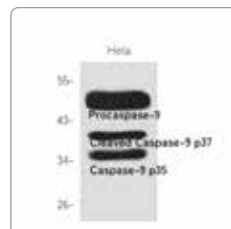
#381336 | **Reactivity:** Human, Mouse | **Application:** WB, IHC-P, ICC/IF, IP
PMID: 36356008 | IF=5.1 | Pig | WB | *Toxins*
PMID: 33802158 | IF=4.5 | Chicken | WB | *Toxins*
PMID: 35276240 | IF=3.7 | Chicken | WB | *Gene*

CDK2 Rabbit mAb

#R22532 | **Reactivity:** Human, Rat, Hamster | **Application:** WB, IHC-F, IHC-P, ICC/IF, IP
PMID: 32698579 | IF=5.3 | Human | WB | *Journal Of Agricultural And Food Chemistry*



#341034 Immunohistochemistry analysis of paraffin-embedded mouse colon tissue using Cleaved-Caspase3 p17 antibody High-pressure and temperature Sodium Citrate pH 6.0 was used for antigen retrieval.



#381336 Western blot analysis of Caspase9 in HeLa lysates using Caspase 9 antibody.

精品一抗 Primary Antibodies



Collagen I alpha 1 Rabbit mAb

#R26615 | **Reactivity:** Human | **Application:** WB, ICC/IF, IP
PMID: 36043447 | IF=8.8 | Human | WB | *CELL PROLIFERATION*
PMID: 36683745 | IF=5.8 | Mouse | WB | *Regenerative Biomaterials*
PMID: 33962484 | IF=5.7 | Mouse | IHC | *Annals Of The New York Academy Of Sciences*

Phospho-CREB (Ser133) Rabbit pAb

#340731 | **Reactivity:** Human, Mouse, Rat | **Application:** WB, IHC-F, IHC-P, ICC/IF, IP, ELISA
PMID: 34719888 | IF=16.8 | Mouse | WB | *Advanced Science*
PMID: 33971268 | IF=7.7 | Mouse | WB | *PHARMACOLOGICAL RESEARCH*

Cytochrome C Rabbit mAb

#R22867 | **Reactivity:** Human, Mouse, Rat | **Application:** WB, IHC-P, IP
PMID: 35847589 | IF=7.3 | Human, Mouse | WB | *Oxidative Medicine and Cellular Longevity*
PMID: 32339800 | IF=7.1 | Human | WB | *Chemosphere*
PMID: 34217321 | IF=5.7 | Human, Mouse | WB, IHC | *Cancer Cell International*

Claudin 5 Rabbit pAb

#343214 | **Reactivity:** Human, Mouse | **Application:** WB, IHC-F, IHC-P, ICC/IF, ELISA
PMID: 34285192 | IF=8.5 | Human | WB, IF | *Cell Death & Disease*
PMID: 34794379 | IF=5.8 | Human | WB, IF, IHC | *Cellular & Molecular Biology Letters*

Collagen III alpha 1 Rabbit mAb

#R23957 | **Reactivity:** Human, Mouse, Rat | **Application:** WB, ICC/IF, IP
PMID: 36398560 | IF=11.0 | Rat | IF | *Advanced Healthcare Materials*
PMID: 34880759 | IF=5.8 | Mouse | WB | *Frontiers in Pharmacology*

CD31 Rabbit pAb

#347526 | **Reactivity:** Human, Mouse | **Application:** WB, IHC-F, IHC-P, ICC/IF, ELISA
PMID: 32483427 | IF=8.6 | Rat, Mouse | IHC | *Theranostics*
PMID: 35972382 | IF=8.3 | Mouse | IF | *Nanoscale*
PMID: 35358930 | IF=5.3 | Human, Rat | WB, IF | *PHYTOMEDICINE*

CD34 Rabbit pAb

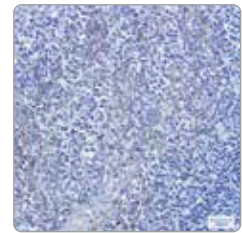
#380824 | **Reactivity:** Human, Mouse, Rat, Dog | **Application:** WB, IHC-P, ICC/IF, IP, FC
PMID: 29738228 | IF=8.1 | Mouse | IF | *ACS Applied Materials & Interfaces*
PMID: 36474528 | IF=7 | Mouse | IHC | *International Journal of Nanomedicine*
PMID: 35073936 | IF=5.7 | Mouse | IHC | *Cancer Cell International*

Caspase 1 Rabbit pAb

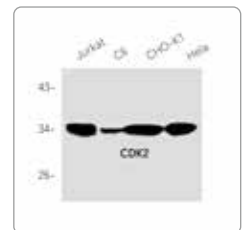
#342947 | **Reactivity:** Human, Mouse, Rat | **Application:** WB, IHC-P, ELISA
PMID: 29456024 | IF=5.9 | Mouse | WB, IHC | *International Journal Of Radiation Oncology Biology Physics*
PMID: 34738612 | IF=5.4 | Mouse | WB | *Food & Function*

ERK1/2 Rabbit pAb

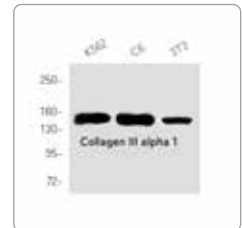
#343830 | **Reactivity:** Human, Mouse, Rat | **Application:** WB, IHC-F, IHC-P, ICC/IF, ELISA
PMID: 36276647 | IF=11.6 | Human | WB | *Theranostics*
PMID: 34988084 | IF=6.7 | Human | WB | *Frontiers in Cell and Developmental Biology*
PMID: 33090092 | IF=5.3 | Chicken | WB | *Frontiers in Cellular and Infection Microbiology*



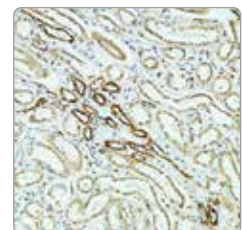
#R22867 Immunohistochemistry analysis of paraffin-embedded Human tonsil using Cytochrome C antibody. High-pressure and temperature Sodium Citrate pH 6.0 was used for antigen retrieval.



#R22532 Western blot analysis of CDK2 in Jurkat, C6, CHO-K1, HeLa lysates using CDK2 antibody.



#R23957 Western blot analysis of Collagen III in K562, C6, 3T3 lysates using Collagen III alpha 1 antibody.



#347526 Immunohistochemistry analysis of paraffin-embedded CD31 in paraffin-embedded Human kidney using CD31 antibody. High-pressure and temperature Sodium Citrate pH 6.0 was used for antigen retrieval.

E

精品一抗 *Primary Antibodies*



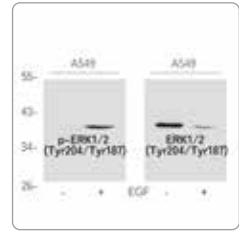
Phospho-ERK1/2 (Tyr204/Tyr187) Rabbit pAb

#310065 | **Reactivity:** Human, Mouse, Rat | **Application:** WB, IHC-P, ICC/IF

PMID: 35287902 | IF=9.4 | Mouse | WB | *CARBOHYDRATE POLYMERS*

PMID: 33836250 | IF=8.7 | Human | WB | *Cancer Letters*

PMID: 33802158 | IF=4.5 | Chicken | WB | *Toxins*



#310065 Western blot analysis of Phospho-ERK1/2 (Tyr204/Tyr187) in A549 cells, untreated or treated with EGF, using Phospho-ERK1/2 (Tyr204/Tyr187) antibody (left) and p44/42 MAPK (Erk1/2) (201246, right).

E Cadherin Rabbit pAb

#340341 | **Reactivity:** Human, Mouse, Rat | **Application:** WB, IHC-F, IHC-P, ICC/IF, ELISA

PMID: 27058058 | IF=8.5 | Mouse | WB | *ACS Applied Materials & Interfaces*

PMID: 31512758 | IF=4.5 | Rat | WB | *Journal Of Cellular Physiology*

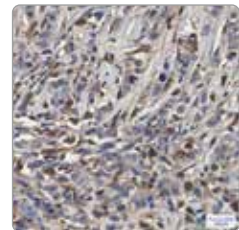
Glutathione Peroxidase 4 Rabbit pAb

#381958 | **Reactivity:** Human, Mouse, Rat | **Application:** WB, IHC-F, IHC-P, ICC/IF

PMID: 33484341 | IF=17.1 | Mouse | IHC | *Basic Research In Cardiology*

PMID: 34863575 | IF=10.6 | Mouse | WB | *Journal Of Hazardous Materials*

PMID: 34679693 | IF=6.3 | Pig | WB | *Antioxidants*



#381958 Immunohistochemistry analysis of paraffin-embedded Human breast cancer using GPX4 antibody. High-pressure and temperature Sodium Citrate pH 6.0 was used for antigen retrieval.

GRP78 BiP (4F11) Mouse mAb

#200310-4F11 | **Reactivity:** Human, Mouse, Rat | **Application:** WB, ICC/IF, IP

PMID: 34592660 | IF=6.8 | Human, Mouse | IP | *Cell Calcium*

PMID: 35326202 | IF=6.3 | Pig | WB | *Antioxidant*

GSK3 beta Rabbit pAb

#340449 | **Reactivity:** Human, Mouse, Rat | **Application:** WB, IHC-F, IHC-P, ICC/IF, IP, ELISA

PMID: 28903391 | IF=5.2 | Mouse | WB, IHC | *Oncotarget*

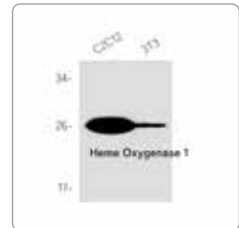
PMID: 31099187 | IF=4.7 | Human | WB | *Journal Of Cellular And Molecular Medicine*

PMID: 34986451 | IF=3.4 | White king pigeon | WB | *Poultry Science*

GSDMD Rabbit mAb

#R24514 | **Reactivity:** Human | **Application:** WB

PMID: 35344845 | IF=3.1 | Mouse | WB, IF | *Immunobiology*



#380753 Western blot analysis of Heme Oxygenase 1 in C2C12, 3T3 lysates using Heme Oxygenase 1 antibody.

Heme Oxygenase 1 Rabbit pAb

#380753 | **Reactivity:** Human, Mouse | **Application:** WB, IHC-P, IP, FC

PMID: 36522639 | IF=17.9 | Mouse | IHC | *GENOME BIOLOGY*

PMID: 34863575 | IF=10.6 | Mouse | WB | *Journal Of Hazardous Materials*

PMID: 32024207 | IF=5 | Human | WB | *Antioxidants*



#R24632 Immunohistochemistry analysis of paraffin-embedded Human tonsil using Hsp70 antibody. High-pressure and temperature Sodium Citrate pH 6.0 was used for antigen retrieval.

HIF1 alpha Rabbit pAb

#340462 | **Reactivity:** Human, Mouse, Rat | **Application:** WB, IHC-F, IHC-P, ICC/IF, ELISA

PMID: 36819784 | IF=7.3 | Rat | WB | *Oxidative Medicine and Cellular Longevity*

PMID: 34811833 | IF=6.8 | Mouse | IHC | *Cell Proliferation*

PMID: 35292769 | IF=6.2 | Mouse | IHC | *Acta Pharmacologica Sinica*

Hsp70 1B Rabbit mAb

#R24632 | **Reactivity:** Human, Mouse, Rat | **Application:** WB, IHC-P, IP

PMID: 34852303 | IF=8.9 | Rat | WB | *Acta Biomaterialia*

PMID: 32483427 | IF=8.6 | Rat, Mouse | IHC | *Theranostics*

PMID: 35093186 | IF=6.8 | Human | WB | *Stem Cell Research & Therapy*

精品一抗 Primary Antibodies



Phospho-Histone H2A.X (Ser139) (7G9) Mouse mAb

#201082-7G9 | Reactivity: Human, Mouse | Application: WB, ICC/IF

PMID: 29760377 | IF=12.3 | Human | IF, IHC | *Nature Communications*

PMID: 35183872 | IF=6.5 | Human | IF | *EUROPEAN JOURNAL OF MEDICINAL CHEMISTRY*

PMID: 36444304 | IF=6.1 | Mouse | IF | *iScience*



#201082-7G9 Immunofluorescence analysis of Phospho-Histone H2A.X (Ser139) (7G9) in 3T3 or Hydroxyureatreated 3T3 using Phospho-Histone H2A.X (Ser139) antibody.

HES1 Rabbit pAb

#381205 | Reactivity: Human, Mouse, Rat | Application: WB, IHC-P, ICC/IF, FC

PMID: 36903383 | IF=4.9 | Mouse | WB | *MOLECULES*

PMID: 31249601 | IF=3.9 | Rat | WB | *Stem Cells International*

Histone H3 Rabbit mAb

#R24572 | Reactivity: Human, Mouse, Rat | Application: WB, IHC-P

PMID: 31077331 | IF=4.9 | Mouse | WB | *Toxicological Sciences*

IKB alpha Rabbit pAb

#380682 | Reactivity: Human, Mouse, Rat | Application: WB, IHC-P, ICC/IF, IP

PMID: 29656250 | IF=6.8 | Rat | WB | *Environmental Pollution*

PMID: 34987701 | IF=6.5 | Human | WB | *Oxidative Medicine and Cellular Longevity*

PMID: 33968294 | IF=6.5 | Human | WB | *Oxidative Medicine and Cellular Longevity*



#R24564 Western blot analysis of Histone H2A.X in 3T3, HeLa lysates using Histone H2A.X antibody.

Phospho-IKB alpha (Ser32/Ser36) Rabbit pAb

#340776 | Reactivity: Human, Mouse, Rat, Monkey | Application: WB, IHC-F, IHC-P, ICC/IF, ELISA

PMID: 35807944 | IF=6.7 | Mouse | WB | *Nutrients*

PMID: 35870375 | IF=6.7 | Human | WB | *Phytochemistry*

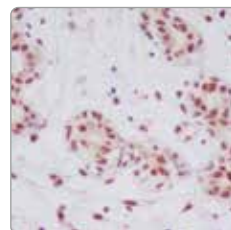
PMID: 33967763 | IF=5.8 | Mouse | WB | *Frontiers in Pharmacology*

IL-1 beta Rabbit pAb

#511369 | Reactivity: Human, Mouse, Rat | Application: WB

PMID: 34022569 | IF=7.9 | Duck | WB | *Science Of The Total Environment*

PMID: 36046826 | IF=5.9 | Mouse | WB | *Frontiers in Pharmacology*



#381100 Immunohistochemistry analysis of paraffin-embedded Human breast using Phospho-JNK1/2/3 (T183+T183+T221) antibody. High-pressure and temperature Sodium Citrate pH 6.0 was used for antigen retrieval.

iNOS Rabbit pAb

#340668 | Reactivity: Human, Mouse, Rat | Application: WB, IHC-F, IHC-P, ICC/IF, ELISA

PMID: 34987701 | IF=7.3 | Mouse | WB | *Materials Science & Engineering C-Materials for Biological Applications*

PMID: 34987701 | IF=6.5 | Human | WB | *Oxidative Medicine and Cellular Longevity*

PMID: 33874953 | IF=5.5 | Mouse | IF | *Journal of Translational Medicine*

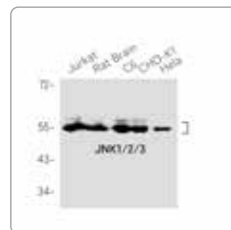
IL-6 Rabbit pAb

#500286 | Reactivity: Human, Mouse, Rat | Application: WB, IHC-P, ICC/IF

PMID: 34687286 | IF=16.8 | Mouse | IHC | *Advanced Science*

PMID: 36304116 | IF=6.1 | Mouse, Rat | WB, IF | *iScience*

PMID: 33853482 | IF=4.5 | Human, Rat | WB | *Adipocyte*



#R22866 Western blot analysis of JNK1/2/3 in Jurkat, rat Brain, C6, CHO-K1, HeLa lysates using JNK1/2/3 antibody.

JNK Rabbit mAb

#R22866 | Reactivity: Human, Mouse, Rat, Hamster | Application: WB, IP

PMID: 36043447 | IF=8.8 | Human | WB | *CELL PROLIFERATION*

PMID: 34532860 | IF=6.9 | Human | WB | *Journal Of Periodontology*

PMID: 34747428 | IF=5.4 | Human | WB | *Food & Function*

精品一抗 *Primary Antibodies*



Phospho-JNK (Thr183) Rabbit pAb

#381100 | **Reactivity:** Human, Mouse, Rat | **Application:** WB, IHC-P, ICC/IF, IP, FC
PMID: 35287902 | IF=9.4 | Mouse | WB | *CARBOHYDRATE POLYMERS*
PMID: 33836250 | IF=8.7 | Human | WB | *Cancer Letters*
PMID: 33913537 | IF=6.9 | Human | WB | *Journal Of Periodontology*

c-Jun Rabbit pAb

#380397 | **Reactivity:** Human, Mouse, Rat | **Application:** WB, IHC-P, ICC/IF, IP
PMID: 36099654 | IF=6.7 | Rat | WB | *PHYTOMEDICINE*
PMID: 31498891 | IF=5.0 | Human | WB, IP | *INTERNATIONAL JOURNAL OF CANCER*

Keap1 Rabbit mAb

#R26935 | **Reactivity:** Human, Mouse | **Application:** WB, IHC-P
PMID: 34943060 | IF=6.3 | Mouse | WB | *Antioxidants*
PMID: 36596445 | IF=5.6 | Duck | WB | *FOOD AND CHEMICAL TOXICOLOGY*

LC3B Rabbit pAb

#382687 | **Reactivity:** Human, Mouse, Rat | **Application:** WB, ICC/IF, IP
PMID: 36108581 | IF=15.3 | Mouse | WB | *BIOMATERIALS*
PMID: 35224166 | IF=7.1 | Human | WB | *Genes & Diseases*
PMID: 34616150 | IF=6.4 | Human | WB | *International Journal of Nanomedicine*

Lamin A/C Rabbit mAb

#R26947 | **Reactivity:** Human, Mouse | **Application:** WB, IHC-P, ICC/IF, IP, FC
PMID: 31230347 | IF=6.4 | Human | WB | *Journal Of Cellular Physiology*

mTOR Rabbit pAb

#380411 | **Reactivity:** Human, Mouse, Rat | **Application:** WB, IHC-P, ICC/IF, IP, FC
PMID: 33553827 | IF=14.5 | Rat | WB, IF | *Bioactive Materials*
PMID: 33931924 | IF=6.7 | Human | WB | *Cancer Science*
PMID: 33995090 | IF=5.8 | Mouse | WB | *Frontiers in Pharmacology*

Phospho-mTOR (Ser2448) Rabbit pAb

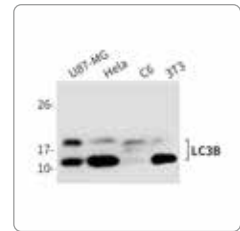
#381557 | **Reactivity:** Human, Mouse, Pig | **Application:** WB, IHC-P
PMID: 35211358 | IF=10.1 | Human | WB | *Molecular Therapy-Nucleic Acids*
PMID: 36675225 | IF=6.2 | Mouse | WB | *INTERNATIONAL JOURNAL OF MOLECULAR SCIENCES*
PMID: 33995090 | IF=5.8 | Mouse | WB | *Frontiers in Pharmacology*

MMP13 Rabbit pAb

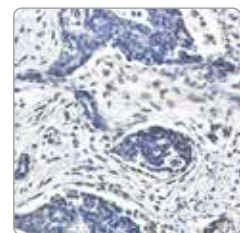
#820098 | **Reactivity:** Human, Mouse, Rat | **Application:** WB, IHC-P
PMID: 36357568 | IF=12.1 | Rat | WB | *EXPERIMENTAL AND MOLECULAR MEDICINE*
PMID: 34926442 | IF=6.7 | Human | WB | *Frontiers in Cell and Developmental Biology*
PMID: 34413926 | IF=6.5 | Human | WB | *Oxidative Medicine and Cellular Longevity*

MMP9 Rabbit pAb

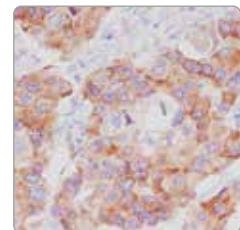
#380831 | **Reactivity:** Human, Rat | **Application:** WB, IHC-P, ICC/IF, FC
PMID: 31560411 | IF=5 | Human, Rat | WB, IHC | *Cell Proliferation*
PMID: 31358056 | IF=4.6 | Human | WB | *Stem Cell Research & Therapy*



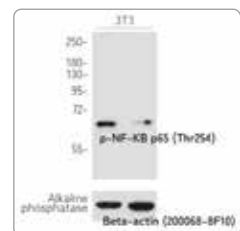
#382687 Western blot analysis of LC3B in U87-MG, HeLa, C6 and 3T3 lysates using LC3B antibody.



#R26947 Immunohistochemistry analysis of paraffin-embedded Human breast cancer using Lamin A/C antibody. High-pressure and temperature Sodium Citrate pH 6.0 was used for antigen retrieval.



#381557 Immunohistochemistry analysis of paraffin-embedded Human breast cancer using Phospho-mTOR (Ser2448) antibody. High-pressure and temperature Sodium Citrate pH 6.0 was used for antigen retrieval.



#310012 Western blot analysis of Phospho-NF-KB p65 (Thr254) in 3T3 lysates untreated or treated with Alkaline phosphatase using Phospho-NF-KB p65 (Thr254) antibody (upper) or β Actin antibody (200068-BP10, lower).

K

L

M

精品一抗 Primary Antibodies



NF-KB p65 Rabbit pAb

#380172 | **Reactivity:** Human, Mouse | **Application:** WB, IHC-P, ICC/IF, IP, FC
PMID: 35691153 | IF=7.4 | Human, Mouse | WB | *BIOMEDICINE & PHARMACOTHERAPY*
PMID: 36551532 | IF=6.6 | Mouse | IF | *Cancers*
PMID: 34413926 | IF=6.5 | Human | WB | *Oxidative Medicine and Cellular Longevity*

Phospho-NF-KB p65 (Thr254) Rabbit pAb

#310012 | **Reactivity:** Human, Mouse, Rat | **Application:** WB, IHC-P, ICC/IF
PMID: 34120022 | IF=5.3 | Mouse | WB | *Bioorganic Chemistry*
PMID: 34737112 | IF=5.3 | Mouse | WB | *Bioorganic Chemistry*
PMID: 36096257 | IF=8.0 | Mouse | WB | *INTERNATIONAL JOURNAL OF BIOLOGICAL MACROMOLECULES*

Nrf2 Rabbit pAb

#380773 | **Reactivity:** Human, Mouse | **Application:** WB, IHC-P, ICC/IF, IP, ChIP
PMID: 36565836 | IF=8 | Pig | WB | *INTERNATIONAL JOURNAL OF BIOLOGICAL MACROMOLECULES*
PMID: 34573125 | IF=6.3 | Mouse | WB | *Antioxidants*
PMID: 34216418 | IF=5.9 | Mouse | WB, IF | *Molecular Nutrition & Food Research*

N Cadherin Rabbit pAb

#380671 | **Reactivity:** Human, Mouse, Rat | **Application:** WB, IHC-P
PMID: 36341818 | IF=5.2 | Mouse | WB | *JOURNAL OF ETHNOPHARMACOLOGY*
PMID: 31512758 | IF=4.5 | Rat | WB | *Journal of Cellular Physiology*
PMID: 34608390 | IF=4.4 | Human | WB | *Journal of Oncology*

NLRP3 Rabbit pAb

#381207 | **Reactivity:** Mouse, Rat | **Application:** WB, IHC-P, ICC/IF, IP, FC
PMID: 36497096 | IF=7.7 | Rat, Human | WB, IF | *Cells*
PMID: 34413926 | IF=6.5 | Human | WB | *Oxidative Medicine and Cellular Longevity*
PMID: 34973190 | IF=4.4 | Mouse | WB | *European Journal Of Pharmacology*

Notch1 Rabbit pAb

#380355 | **Reactivity:** Human, Mouse, Rat | **Application:** WB, IHC-P, ICC/IF, FC
PMID: 34726809 | IF=6.8 | Mouse | WB, IF | *Cell Proliferation*
PMID: 36903383 | IF=4.9 | Mouse | WB | *MOLECULES*

NeuN Rabbit pAb

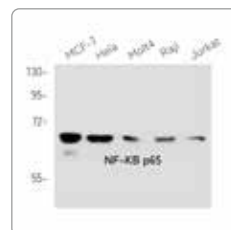
#381075 | **Reactivity:** Human, Mouse, Rat | **Application:** WB, IHC-P, ICC/IF, FC
PMID: 35945613 | IF=20.6 | Mouse | IF | *JOURNAL OF MEDICAL VIROLOGY*
PMID: 30232645 | IF=2.3 | Human | WB | *Lasers In Medical Science*

Osteocalcin Rabbit pAb

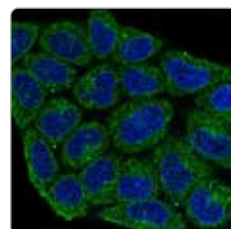
#614487 | **Reactivity:** Human | **Application:** WB, IHC-P
PMID: 36516309 | IF=17.5 | Pig, Human | IF | *Advanced Science*
PMID: 36398560 | IF=11.0 | Rat | IF, IHC | *Advanced Healthcare Materials*
PMID: 32642002 | IF=8.6 | Human | WB | *Theranostics*

p38 (5A1) Mouse mAb

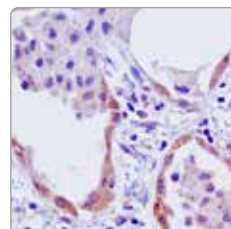
#200782 | **Reactivity:** Human, Mouse, Rat, Monkey | **Application:** WB
PMID: 33184450 | IF=8.5 | Mouse | WB | *Cellular & Molecular Immunology*
PMID: 33967763 | IF=5.8 | Mouse | WB | *Frontiers in Pharmacology*
PMID: 34699606 | IF=5.4 | Rat | WB | *Journal Of Neurochemistry*



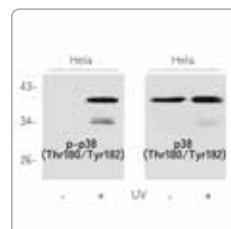
#380172 Western blot analysis of NF-KB p65 in MCF-7, HeLa, Molt4, Raji and Jurkat lysates using NF-KB p65 antibody.



#380773 Immunofluorescence analysis of Nrf2 in HeLa using Nrf2 antibody.



#381207 Immunohistochemistry analysis of paraffin-embedded Human lung carcinoma using NALP3 antibody. High-pressure and temperature Sodium Citrate pH 6.0 was used for antigen retrieval.



#310091 Western blot analysis of Phospho-p38 (Thr180/Tyr182) in HeLa lysates untreated or treated with UV lysates using P38 MAPK (Phospho-Thr180/Tyr182) antibody. (left) or p38 MAPK antibody (310008, right).

精品一抗 *Primary Antibodies*



Phospho-p38 (Thr180/Tyr182) Rabbit pAb

#310091 | **Reactivity:** Human, Mouse, Rat | **Application:** WB
PMID: 35287902 | IF=9.4 | Mouse | WB | *CARBOHYDRATE POLYMERS*
PMID: 33836250 | IF=8.7 | Human | WB | *Cancer Letters*
PMID: 33913537 | IF=6.9 | Human | WB | *Journal Of Periodontology*

PARP1 Rabbit mAb

#R25279 | **Reactivity:** Human, Mouse, Rat | **Application:** WB, IHC-F, IHC-P, ICC/IF
PMID: 34217321 | IF=5.7 | Mouse | WB, IHC | *Cancer Cell International*
PMID: 33562281 | IF=6.3 | Rat | WB | *Antioxidants*

Cleaved-PARP1 Rabbit pAb

#380374 | **Reactivity:** Human | **Application:** WB, ICC/IF, IP, FC
PMID: 33754061 | IF=11.6 | Human | WB, IF, FC | *Theranostics*
PMID: 32075676 | IF=7.1 | Human | WB | *Journal Of Experimental & Clinical Cancer Research*
PMID: 32804484 | IF=6.1 | Human, Mouse | WB, IF | *Biomacromolecules*

PI3 Kinase p85 alpha (1C8) Mouse mAb

#251221 | **Reactivity:** Human, Mouse, Rat | **Application:** WB, IHC-P
PMID: 36030680 | IF=7.1 | Mouse | WB, IHC | *ECOTOXICOLOGY AND ENVIRONMENTAL SAFETY*
PMID: 34975499 | IF=5.8 | Rat | WB | *Frontiers in Pharmacology*
PMID: 32246800 | IF=4.9 | Porcine | WB | *Faseb Journal*

Phospho-PI3 Kinase p85/p55 (Tyr467/Tyr199) Rabbit pAb

#341468 | **Reactivity:** Human, Mouse, Rat, Monkey | **Application:** WB, IHC-F, IHC-P, ICC/IF, ELISA
PMID: 35883196 | IF=8.1 | Rat | WB | *Stem Cell Research & Therapy*
PMID: 33937078 | IF=6.2 | Human | WB | *Frontiers in Oncology*
PMID: 34975499 | IF=5.8 | Rat | WB | *Frontiers in Pharmacology*

Phospho-PKC alpha (Thr638) Rabbit pAb

#381613 | **Reactivity:** Human, Mouse, Rat | **Application:** WB, IHC-P, ICC/IF, IP
PMID: 34953003 | IF=6.8 | Mouse | WB | *Cell Proliferation*

Phospho-p53 (Ser37) Rabbit pAb

#310029 | **Reactivity:** Human, Mouse, Rat | **Application:** WB, ICC/IF
PMID: 34739932 | IF=6.3 | Human | WB | *ECOTOXICOLOGY AND ENVIRONMENTAL SAFETY*
PMID: 34562520 | IF=8.7 | Human, Mouse | IF, IHC | *Cancer Letters*

Parkin Rabbit pAb

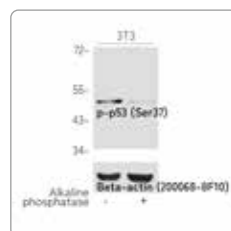
#381626 | **Reactivity:** Human, Mouse, Rat | **Application:** WB, IHC-P, ICC/IF, IP, FC
PMID: 34229552 | IF=16 | Mouse | IF | *Autophag*
PMID: 36108581 | IF=15.3 | Mouse | WB | *BIOMATERIALS*

SQSTM1/p62 Rabbit mAb

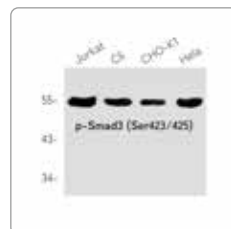
#R25788 | **Reactivity:** Human, Mouse | **Application:** WB, IHC-F, IHC-P, ICC/IF, IP
PMID: 35334944 | IF=5.7 | Mouse | WB | *Nutrients*



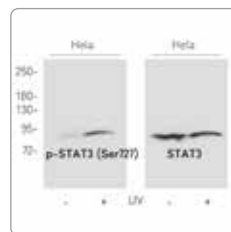
#380374 Immunofluorescence analysis of Cleaved-PARP1 in HeLa using Cleaved-PARP antibody.



#310029 Western blot analysis of Phospho-p53 (Ser37) in 3T3 cells untreated or treated with Alkaline phosphatase using p53 (Phospho-Ser37) antibody (upper) or betaActin antibody (lower).



#R22919 Western blot analysis of Phospho-Smad3 (Ser423/425) in Jurkat, C6, CHO-K1, HeLa lysates using Phospho-Smad3 (Ser423/425) antibody.



#310019 Western blot analysis of Phospho-STAT3 (Ser727) in HeLa lysates untreated or treated with UV, using STAT3 (Phospho-Ser727) antibody (left) or p38 MAPK antibody (right).

精品一抗 *Primary Antibodies*



Smad3 Rabbit mAb

#R25743 | **Reactivity:** Human, Mouse, Rat, Hamster | **Application:** WB, IP
PMID: 31607479 | IF=2.9 | Mouse | WB | *Biochemical And Biophysical Research Communications*

Phospho-Smad3 (Ser423/425) Rabbit mAb

#R22919 | **Reactivity:** Human, Rat, Hamster | **Application:** WB
PMID: 36631974 | IF=6.4 | Human | WB | *PHYTOTHERAPY RESEARCH*
PMID: 34375196 | IF=5.3 | Human | WB | *Bioorganic Chemistry*
PMID: 34863793 | IF=4.7 | Mouse | WB, IF | *Biochimica Et Biophysica Acta-Molecular Cell Research*

STAT3 Rabbit pAb

#251611 | **Reactivity:** Human, Mouse, Rat | **Application:** WB, IHC-F, IHC-P, ICC/IF, ELISA
PMID: 33761599 | IF=6.5 | Human, Mouse | WB | *Biomedicine & Pharmacotherapy*

Phospho-STAT3 (Ser727) Rabbit pAb

#310019 | **Reactivity:** Human, Mouse, Rat | **Application:** WB, IHC-P, ICC/IF
PMID: 36183753 | IF=8.0 | Mouse | WB | *INTERNATIONAL JOURNAL OF BIOLOGICAL MACROMOLECULES*
PMID: 34375196 | IF=5.3 | Human | WB | *Bioorganic Chemistry*
PMID: 34863793 | IF=4.7 | Mouse | WB, IF | *Biochimica Et Biophysica Acta-Molecular Cell Research*

TNF alpha Rabbit pAb

#346654 | **Reactivity:** Human, Mouse, Rat | **Application:** WB, IHC-F, IHC-P, ICC/IF, ELISA
PMID: 34687286 | IF=16.8 | Mouse | IHC | *Advanced Science*
PMID: 35883482 | IF=6.1 | Mouse | WB | *Biomolecules*
PMID: 34722327 | IF=5.3 | Mouse | IF | *Frontiers in Cellular and Infection Microbiology*

TSG101 Rabbit mAb

#R25999 | **Reactivity:** Human, Mouse, Rat | **Application:** WB, IHC-F, IHC-P, ICC/IF
PMID: 36404468 | IF=17.3 | Human | WB | *Journal of Extracellular Vesicles*
PMID: 33061363 | IF=5.1 | Rat, Porcine | WB | *International Journal of Nanomedicine*
PMID: 33320548 | IF=4.2 | Human | WB | *ACS Biomaterials Science & Engineering*

TGF beta 1 Rabbit pAb

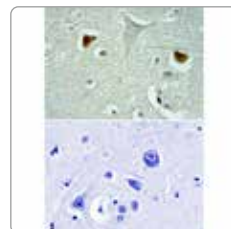
#346599 | **Reactivity:** Human, Mouse, Rat | **Application:** WB, IHC-F, IHC-P, ICC/IF, ELISA
PMID: 36581319 | IF=9.5 | Human | WB | *BRITISH JOURNAL OF PHARMACOLOGY*
PMID: 35315457 | IF=6.8 | Human | IF | *Biomaterials Science*

Vimentin Rabbit mAb

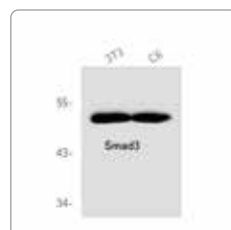
#R22775 | **Reactivity:** Human, Mouse, Rat, Hamster | **Application:** WB, IHC-F, IHC-P, ICC/IF
PMID: 35036064 | IF=8.9 | Human | WB | *Molecular Therapy-Nucleic Acids*
PMID: 36497096 | IF=7.7 | Rat, Human | IF | *Cells*
PMID: 35241181 | IF=6.8 | Human | WB | *Stem Cell Research & Therapy*

Wnt3a Rabbit pAb

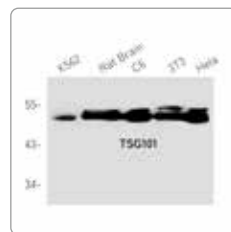
#513601 | **Reactivity:** Human, Rat | **Application:** IHC-P, ICC/IF
PMID: 33116310 | IF=42.8 | Mouse | IF | *Nature*
PMID: 32483427 | IF=8.6 | Rat, Mouse | IHC | *Theranostics*



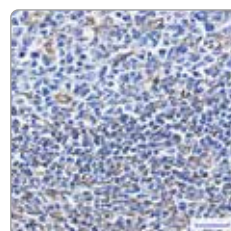
#251611 Immunohistochemistry analysis of paraffin-embedded Human brain using STAT3 antibody. High-pressure and temperature Tris-EDTA pH 8.0 was used for antigen retrieval. Negative control (lower) obtained from antibody was preabsorbed by immunogen peptide.



#R25743 Western blot analysis of Smad3 in 3T3, C6 lysates using Smad3 antibody.



#R25999 Western blot analysis of TSG101 in K562, rat Brain, C6, 3T3, HeLa lysates using TSG101 antibody.



#R22775 Immunohistochemistry analysis of paraffin-embedded Human tonsil using Vimentin antibody. High-pressure and temperature Sodium Citrate pH 6.0 was used for antigen retrieval.

精品内参 Loading Control Antibodies



GAPDH (7E4) Mouse mAb

#200306-7E4 | Application: WB

Reactivity:

Human, Monkey, Rat, Mouse, Saccharomyces cerevisiae, Pichia pastoris, Hamster

PMID: 35228528 | IF=13.6 | Mouse | WB | *Bone Research*

PMID: 33540170 | IF=12.4 | Mouse | WB | *BIOMATERIALS*

PMID: 36470392 | IF=10.6 | Mouse | WB | *Acta Biomaterialia*

beta Tubulin (1E1) Mouse mAb

#200608 | Application: WB, ICC/IF

Reactivity:

Human, Mouse, Monkey, Goat, Hamster, Rat, Chlamydomonas reinhardtii

PMID: 32989223 | IF=20.5 | Rat | WB | *Cell Research*

PMID: 27050454 | IF=16 | Human | WB | *Autophagy*

beta Actin Rabbit pAb

#380624 | Application: WB, IHC-P, ICC/IF

Reactivity:

Human, Mouse, Rat

PMID: 31806406 | IF=12.5 | Mouse | WB | *Biomaterials*

PMID: 36126227 | IF=8.0 | Human | WB | *JOURNAL OF MEDICINAL CHEMISTRY*

PMID: 34216418 | IF=5.9 | Mouse | WB, IF | *Molecular Nutrition & Food Research*

PCNA (2E1) Mouse mAb

#200947-2E1 | Application: WB, IHC-F, IHC-P, ICC/IF, IP

Reactivity:

Human, Mouse, Monkey, Rat, Hamster

PMID: 34876557 | IF=13.6 | Mouse | IHC | *Bone Research*

PMID: 35277477 | IF=6.3 | Mouse | WB | *International Journal of Oral Science*

PMID: 36632926 | IF=5.0 | Mouse | WB, IHC | *BIOCHIMICA ET BIOPHYSICA ACTA-MOLECULAR CELL RESEARCH*

COX IV (4D11) Mouse mAb

#200147 | Application: WB, IHC-F, IHC-P, ICC/IF, IP, FC

Reactivity:

Human, Mouse, Rat, Hamster, Goat, Monkey

PMID: 33609723 | IF=7.4 | Mouse | IF | *FREE RADICAL BIOLOGY AND MEDICINE*

PMID: 31138329 | IF=7.1 | Human | WB | *Journal Of Experimental & Clinical Cancer Research*

PMID: 32075676 | IF=7.1 | Human | WB | *Journal Of Experimental & Clinical Cancer Research*

Lamin B1 (5G8) Mouse mAb

#201169 | Application: WB, ICC/IF

Reactivity:

Human, Mouse, Monkey

PMID: 34321122 | IF=3.7 | Catfish | WB | *British Journal Of Nutrition*

PMID: 31262447 | IF=2.7 | Human | WB | *Biochemical And Biophysical Research Communications*

beta Actin (8F10) Mouse mAb (HRP)

#700068 | Application: WB

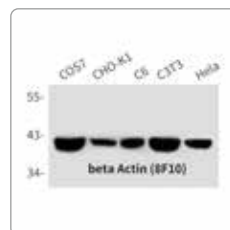
Reactivity:

Human, Mouse, Monkey, Goat, Rat, Hamster, Saccharomyces cerevisiae, Arabidopsis, Pichia pastoris, Rabbit, Zebrafish, Drosophila, Leaf of Rice, Fruit of Cucumber, Chlamydomonas reinhardtii

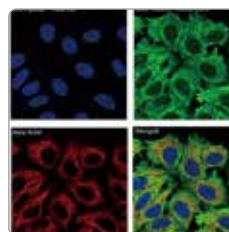
PMID: 35836291 | IF=23.1 | Human | WB | *Journal of Hematology & Oncology*

PMID: 32512449 | IF=9.0 | Fungal strain | WB | *JOURNAL OF HAZARDOUS MATERIALS*

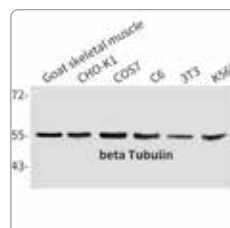
PMID: 32311768 | IF=7.4 | Mouse | WB | *Immunology*



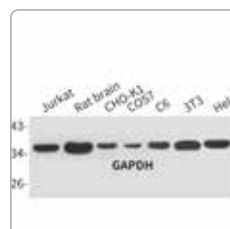
#700068 Western blot analysis of beta actin in HeLa, 3T3, C6, CHO-K1 and COS7 lysates using beta actin antibody conjugated with HRP.



#380624 Immunofluorescence analysis of beta actin in HeLa using beta actin antibody.



#200608 Western blot analysis of Tubulin beta in Goat skeletal muscle, CHO-K1, COS7, C6, 3T3 and K562 lysates using Tubulin beta antibody.



#200306-7E4 Western blot analysis of GAPDH in HeLa, 3T3, C6, COS7, CHO-K1, rat brain and Jurkat lysates using GAPDH antibody.

精品内参 *Loading Control Antibodies*



beta Tubulin (1E1) Mouse mAb (HRP)

#700608 | Application: WB

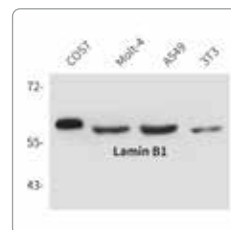
Reactivity:

Human, Mouse, Monkey, Hamster, Rat

PMID: 35788567 | IF=68.1 | Human | WB | *NATURE BIOTECHNOLOGY*

PMID: 33864160 | IF=6.7 | Human | WB | *Cell Biology And Toxicology*

PMID: 31733346 | IF=4.3 | Monkey | WB | *Journal Of Steroid Biochemistry And Molecular Biology*



#201169 Western blot analysis of Lamin B1 in COS7, Molt4, A549 and 3T3 lysates using Lamin B1 antibody.



#200947-2E1 Immunohistochemistry analysis of paraffin-embedded Human colorectal carcinoma using PCNA antibody (2E1G10H10). High-pressure and temperature Sodium Citrate pH 6.0 was used for antigen retrieval.

精品标签 Tag Antibodies



Flag Tag (10E1) Mouse mAb

#390002 | **Reactivity:** Transfected | **Application:** WB, IP
PMID: 34229552 | IF=16 | Mouse | IF | **Autophagy**
PMID: 32004500 | IF=15.9 | Human | WB | **Cell Host & Microbe**
PMID: 36306677 | IF=10.7 | Escherichia coli | WB | **Redox Biology**

GFP/eGFP Tag Rabbit pAb

#300943 | **Reactivity:** Transfected | **Application:** WB, IP
PMID: 36503931 | IF=12.1 | Arabidopsis thaliana | WB, ColIP | **PLANT CELL**
PMID: 34260941 | IF=9.4 | Arabidopsis thaliana plant | IP | **Cell Reports**
PMID: 34921490 | IF=5.7 | Strains | WB | **Molecular Plant Pathology**

His Tag (1H3) Mouse mAb

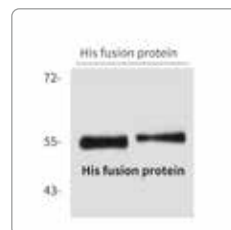
#230001 | **Reactivity:** Transfected | **Application:** WB
PMID: 28961231 | IF=25.6 | E. coli | WB | **Cell Research**
PMID: 36528652 | IF=17.7 | Mouse | WB | **Nature Communications**
PMID: 30537137 | IF=5.5 | E. coli | WB | **FEBS Journal**

His Tag (2A2) Mouse mAb

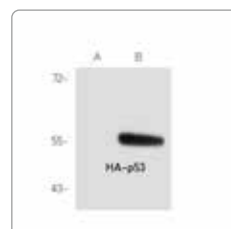
#250114 | **Reactivity:** Transfected | **Application:** WB, ICC/IF, IP
PMID: 30617346 | IF=14.3 | Human | IP | **Nature Microbiology**
PMID: 34790051 | IF=3.7 | Human | IF | **International Journal of Medical Sciences**

HA Tag Rabbit pAb

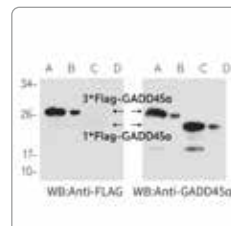
#390001 | **Reactivity:** Transfected | **Application:** WB, IP, ELISA
PMID: 30676737 | IF=6.9 | Mouse | WB, IP | **Analytical Chemistry**
PMID: 30683868 | IF=6.0 | Human | WB | **Cell Death & Disease**



#250114 2 μ g His fusion protein+
Primary antibody dilution at 1) 1:5000,
2) 1:10000



#390001 Western blot analysis of
HA Tag (3C6) in CHO-K1 transfected
with empty vector (A) or HA tagged
p53 (B) using HA Tag antibody.



#390002 Western blot analysis of
Flag Tag (10E1) in CHO-K1 cells
transfected with FlagGADD45a (C
and D), 3*FlagGADD45a (A and B)
as indicated, using Flagtag antibody
(left) and GADD45a antibody (201061,
right) as loading control.

精品二抗 *Secondary Antibodies*



Goat Anti-Rabbit IgG H&L (HRP)

#511203 | Reactivity: Rabbit | Application: WB
PMID: 36200834 | IF=19.1 | Rabbit | WB | *NUCLEIC ACIDS RESEARCH*
PMID: 28911109 | IF=11.1 | Rabbit | WB | *Nucleic Acids Research*
PMID: 34260941 | IF=9.4 | Rabbit | WB | *Cell Reports*

Goat Anti-Mouse IgG H&L (HRP)

#511103 | Reactivity: Mouse | Application: WB
PMID: 28961231 | IF=25.6 | Mouse | WB | *Cell Research*
PMID: 32004500 | IF=15.9 | Mouse | WB | *Cell Host & Microbe*
PMID: 34976434 | IF=8.9 | Mouse | WB | *Molecular Therapy-Nucleic Acids*

Goat Anti-Mouse IgG H&L (TRITC)

#511102 | Reactivity: Mouse | Application: ICC/IF, FC
PMID: 35589692 | IF=18.1 | Mouse | IF | *Signal Transduction and Targeted Therapy*
PMID: 33240871 | IF=6.7 | Mouse | IF | *Frontiers in Cell and Developmental Biology*

Goat Anti-Rabbit IgG H&L (FITC)

#511201 | Reactivity: Rabbit | Application: ICC/IF, FC
PMID: 36527723 | IF=32.1 | Rabbit | IF | *ADVANCED MATERIALS*
PMID: 29738228 | IF=9.2 | Rabbit | IF | *ACS Applied Materials & Interfaces*
PMID: 33714115 | IF=7.5 | Rabbit | IF | *Food Chemistry*

Goat Anti-Mouse IgG H&L (FITC)

#511101 | Reactivity: Mouse | Application: ICC/IF, FC
PMID: 36484389 | IF=20.7 | Mouse | IF | *JOURNAL OF MEDICAL VIROLOGY*
PMID: 31346171 | IF=14.9 | Mouse | IF | *Nature Communications*
PMID: 29713715 | IF=6.9 | Mouse | IF | *Nanoscale*

Goat Anti-Rabbit IgG H&L (TRITC)

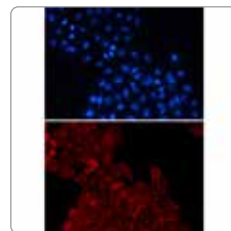
#511202 | Reactivity: Rabbit | Application: ICC/IF, FC
PMID: 29738228 | IF=9.2 | Rabbit | IF | *ACS Applied Materials & Interfaces*
PMID: 34604035 | IF=6.2 | Rabbit | IF | *Frontiers in Oncology*
PMID: 34383332 | IF=6.4 | Rabbit | IF | *Pediatric Allergy And Immunology*

Goat Anti-Mouse IgG H&L (AF594)

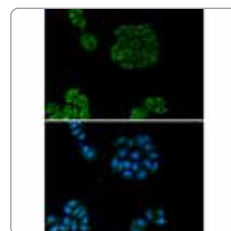
#550042 | Reactivity: Mouse | Application: ICC/IF, IHC-F, FC, ELISA
PMID: 34484806 | IF=6.4 | Mouse | IF | *Regenerative Biomaterials*
PMID: 34812899 | IF=4.5 | Mouse | IF | *Psychopharmacology*
PMID: 36244457 | IF=3.6 | Mouse | ICC, IF | *BRAIN RESEARCH*

Goat Anti-Rabbit IgG H&L (AF594)

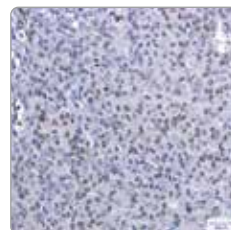
#550043 | Reactivity: Rabbit | Application: ICC/IF, IHC-F, FC, ELISA
PMID: 35415308 | IF=14.6 | Rabbit | IF | *Bioactive Materials*
PMID: 34392171 | IF=2.7 | Rabbit | IF | *Theriogenology*



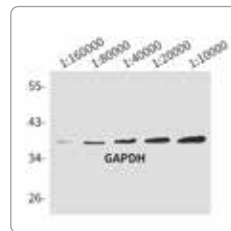
#550042 Immunocytochemistry of Fatty Acid Synthase (green) in HeLa using Fatty Acid Synthase mouse mAb (cat.#200194), and DAPI(blue). Secondary antibody: Goat Anti-mouse IgG (H&L) Alexa Fluor 594 diluted at 1/500.



#511101 Immunocytochemistry of Fatty Acid Synthase (green) in HeLa using Fatty Acid Synthase mouse mAb (cat.#200194), and DAPI(blue). Secondary antibody: Goat Anti-mouse IgG (H&L) FITC diluted at 1/500.



#511103 Immunohistochemistry analysis of paraffin-embedded Human breast cancer tissue using PRMT6 (2C3) antibody(200171). Secondary antibody Goat Anti-mouse IgG (H&L) (HRP conjugate) (51103)High-pressure and temperature Sodium Citrate pH 6.0 was used for antigen retrieval.



#511203 Western blot analysis of HeLa lysates using GAPDH antibody (301341) as the primary antibody, decreasing concentrations of Goat anti-rabbit IgG (H&L) (HRP conjugate) secondary antibodies were used.

关注正能新资讯

Check Our Latest News Here!

为了适应广大科研工作者的使用习惯，我们在各类主流媒体平台均设置了官方账号。

知乎

知乎



官方网站

www.zen-bio.cn



抖音 TikTok



丁香通商铺

zenbio.biomart.cn

bilibili

哔哩哔哩



微信公众号 / 视频号

正能生物 ZENBIO

我们会定期将各类型学术资料及产品信息更新至各大线上平台，便于大家及时了解各领域技术发展趋势和获取最新产品资讯。



正能一直在您身边！

*We Will Always Be by Your Side
and Support You in Every Way Possible !*



产品咨询 / 实验服务

9: 00 — 18: 00

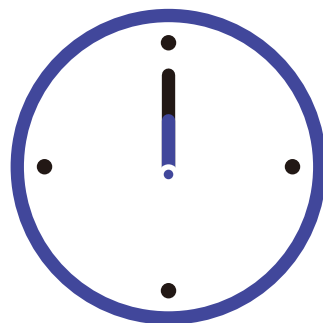
周一至周五

Tel : 4008 863 973

转1: 产品咨询 ; 转2: 技术支持

邮件反馈处理

24小时内



售后支持

After-sale Support

正能生物拥有成熟的售后处理体系，本着“客观细致，宽严相济”的服务态度，不断接受大家的检验和建议。



前端沟通

- 用户填写售后反馈单



邮件反馈

- 技术支持查看并分析反馈内容
- 核对订单详情、出库时间、地址等，已验证反馈有效性



电话沟通

- 技术支持将在24h内与用户联系
- 双方将确认细节并达成暂时的处理意向



对接结果

- 技术支持以邮件形式告知相关人员结果
- 常见结果: 优化、换货、退货、质检和举证



品质纯正 科技赋能

Advance Your Research with High-quality Antibodies

zenbio

Trusted Antibody Manufacturer Since 2007



正能各区域代理商联系方式

- ①登录“正能官网”→顶部菜单栏【关于我们】→【联系我们】
- ②关注“正能生物”公众号→底部菜单栏【抗体订购】→【订购渠道】
- ③拨打“400咨询热线”，转1

成都正能生物技术有限责任公司

☎ 4008 863973 🌐 www.zen-bio.cn

地址：成都市·高新区·天府生命科技园·爱斯特大厦
邮箱：support@zen-bioscience.com(技术支持)
sales@zen-bioscience.com(订购咨询)

更多详情请咨询当地代理商或拨打正能客服热线

扫码 → 关注微信公众号

